

Alaska Department of Fish and Game

Habitat Section
Southeast Region



112-50-10300-2003-3910

ADDITION

Water body name:

Quad: Sitka D-4

Upper Reach Latitude: 57.920130 **Longitude:** -135.225614

Lower Reach Latitude: 57.921229 **Longitude:** -135.224396

Survey date: 8/10/2022

Species & Lifestage: CO

Survey crew: FC

Findings: We surveyed this cataloged stream using baited minnow traps and GPS. We captured juvenile coho salmon and Dolly Varden. The stream has a mix of gravel and cobble substrate and flows through a well-bedded 4 ft wide culvert (Table 1; Figures 1–3).

Recommendations: Extend upper extent of Stream No. 112-50-10300-2003-3910 in the anadromous waters catalog (Figure 4).

Nomination: Pending

Table 1.—112-50-10300-2003-3910 survey data.

| Waypoint | Latitude | Longitude | Notes | Stream Width ft | Stream Substrate | Habitat Features | Gradient % | Sample Effort | Sample Results |
|----------|-----------|-------------|--|-----------------|------------------------------|-----------------------|------------|---------------|----------------|
| 1321 | 57.920134 | -135.225634 | 5-6' wide CMP set ~2' in sediment. Mix of gravel, cobble, and sand in pipe. Minnow trap soaked upstream of culvert ~3 hrs. | 4-6 | Large Gravel Small Gravel | Spawning Substrate | 2-4 | MT | 2 CO 5 DV |



Figure 1.—Juvenile coho salmon captured at waypoint 1321.



Figure 2.—Upstream view of stream No. 112-50-10300-2003-3910 at waypoint 1321.



Figure 3.—Culvert inlet at waypoint 1321.

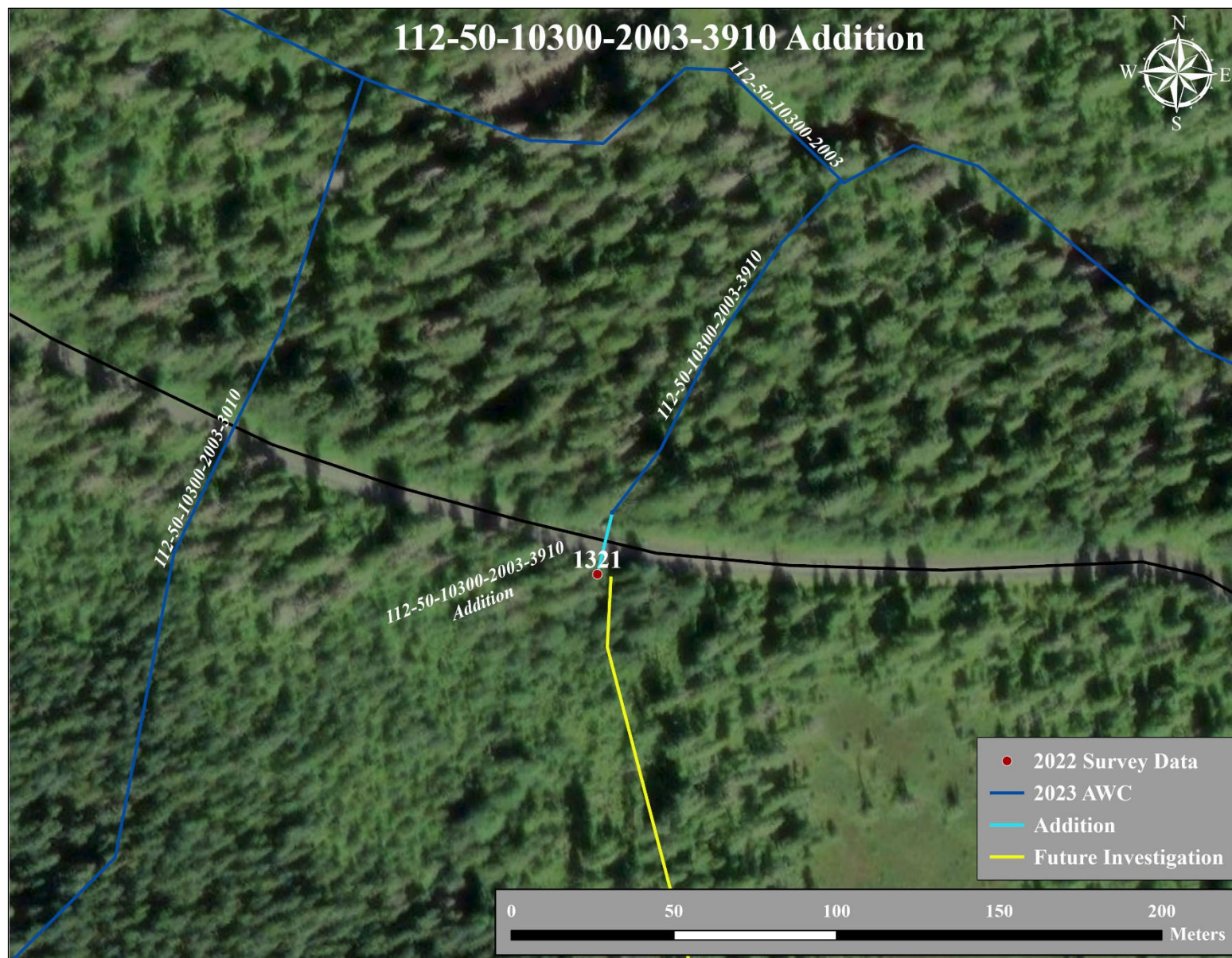


Figure 4.–Stream No. 112-50-10300-2003-3910 addition map.